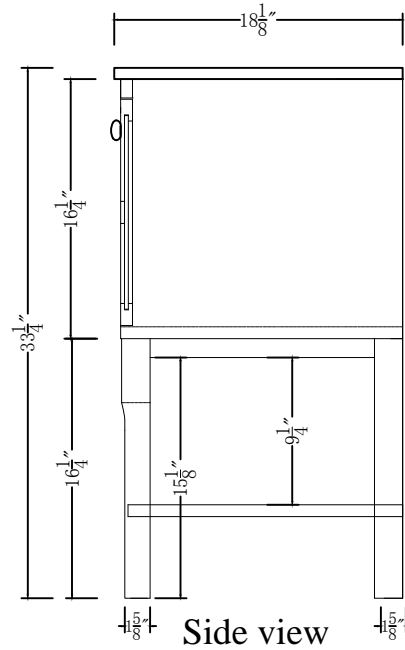
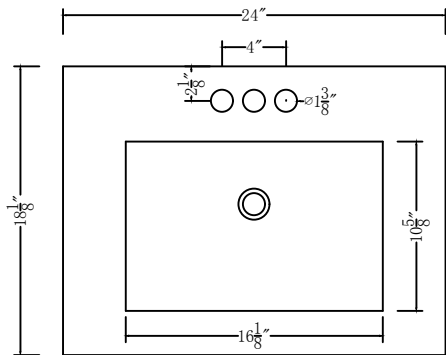


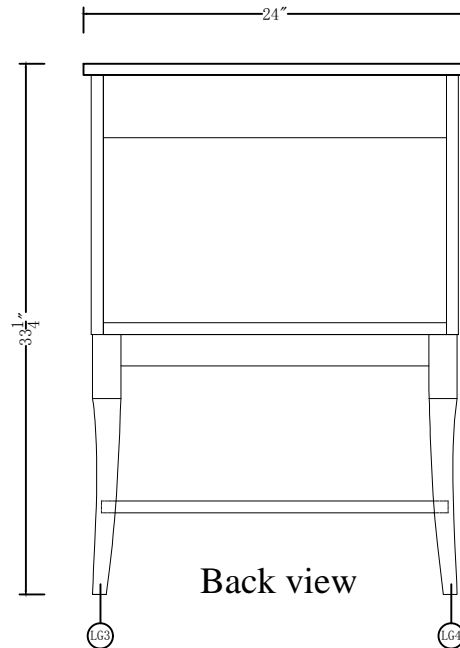
Front view




Side view




Top view



Back view

|   |  |
|---|--|
| DWG. NO.  |  |
| MODEL NO:<br>VF2100   |  |
| SPEC NO:  |  |
| QUANTITY: 1   |  |
| DATE:   |  |
| CHECKED BY:   |  |
| FOR PROPOSAL ONLY ALL<br>DIMENSIONS TO BE VERIFIED                                    |  |
| PROJECT:  |  |
| COLOR:  |  |
| FINISH:   |  |
| REVISIONS   |  |
| 1   |  |
| 2   |  |
| 3   |  |
| 4   |  |
| 5   |  |
| 6   |  |
|  |  |
| 500-550 E. Erie Avenue  |  |
| Philadelphia PA 19134   |  |
| 1-888-388-3390  |  |

|  |                 |                         |              |                              |         |                          |               |                         |            |
|--|-----------------|-------------------------|--------------|------------------------------|---------|--------------------------|---------------|-------------------------|------------|
| Model #                                    | VF2100          | Finish                  | White        | Mirror type                  | N/A     | Beveled glass            | N/A           | Frame material          | Solid Wood |
| Solid wood construction                    | Solid wood legs | Drawers Included        | No           | Number of Drawers            | N/A     | Joinery Type             | N/A           | Drawer railing          | N/A        |
| Drawer Length                              | N/A             | Drawers Width           | N/A          | Drawer Height                | N/A     | Shelves                  | Yes           | Number of Shelves       | 1          |
| Doors included                             | Yes             | Number of Doors         | 2            | Finished Back                | Yes     | Hardware finish          | Chrome        | Assembly)               | N/A        |
| Countertop included                        | Yes             | Countertop material     | Ceramic      | Number of Sinks accommodated | 1       | Sink material            | Ceramic       | Sink length             | 24''       |
| Sink width                                 | 18''            | Sink height             | 6.3''        | Sink hole size               | 1.75''  | Mounting type            | Free-standing | Backsplash              | N/A        |
| Backsplash length                          | N/A             | Backsplash width        | N/A          | Backsplash height            | N/A     | Drain assembly included  | No            | Faucet included         | No         |
| Faucet type                                | N/A             | Faucet hole size        | 1.2''        | Faucet hole spacing          | 4''     | Length/Diameter          | 24''          | Width                   | 18''       |
| Height                                     | 34''            | Package LENGTH (inches) | 27''         | Packaged WIDTH (inches)      | 21.5''  | Packaged Height (inches) | 25''          | Package Weight (lbs)    | 80         |
| Product Weight                             | 68              | Shipping type           | Small Parcel | table top width              | 18''    | table top finish         | White         | glass top tempered      | N/A        |
| Table top maximum weight                   | 66 lbs          | powder coated finish    | N/A          | base material                | MDF     | top material             | Ceramic       | wood species            | Poplar     |
| Tip over restraint strap                   | No              | shape of top            | Rectangular  | lift top                     | N/A     | shelf material           | MDF           | adjustable shelves      | N/A        |
| Drawer Handle designs                      | N/A             | safty stop              | N/A          | felt lined drawers           | N/A     | drawer glide extension   | N/A           | drawer glide material   | N/A        |
| Drawer dividers                            | N/A             | Drawer Interior finish  | N/A          | Ball Bearing Glides          | N/A     | soft close drawer glides | N/A           | Number of cabinets      | 1          |
| shelf height                               | 5.1''           | shelf width             | 21.8''       | shelf depth                  | 17.2''  | shelf thickness          | 0.75''        | Any certification       | No         |
| California Proposition 65 warning required | Yes             | Drawers Interior Height | N/A          | Drawer Interior Width        | N/A     | drawer Interior Depth    | N/A           | cabinet interior height | 15.5''     |
| cabinet interior width                     | 21.5''          | cabinet interior depth  | 17''         | leg height                   | 16.3''  | leg width                | 1.6''         | leg depth               | 1.6''      |
| gloss finish                               | N/A             | stackable               | Yes          | leg design                   | KD legs | sink type                | Vanity Sink   | # of faucet holes       | 3          |
| door thickness                             | 0.75''          | false drawers?          | No           | Knob Model                   |         |                          |               |                         |            |

|  |
|--|
| DWG. NO.   |
| MODEL NO:<br>VF2100  |
| SPEC NO:   |
| QUANTITY: 1  |
| DATE:  |
| CHECKED BY:  |
| FOR PROPOSAL ONLY ALL DIMENSIONS TO BE VERIFIED  |
| PROJECT:   |
| COLOR:   |
| FINISH:  |
| REVISIONS  |
| △  |
| △  |
| △  |
| △  |
| △  |
| △  |
|  ELEGANT<br>FURNITURE & LIGHTING™ |
| 500-550 E. Erie Avenue<br>Philadelphia PA 19134<br>1-888-388-3390  |