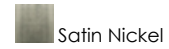




PRODUCT DESCRIPTION

Nathaniel Parker Willis once wrote "There they stand, the innumerable stars, shining in order like a living hymn, written in light". The Starburst collection evokes a story with the amazing multi-light pendants available in clear, blue, green, amber or violet. Each burst of color is suspended within its own glass globe, adding to the unique tale of the design. Chrome hardware and a satin nickel finish canopy completes each structure, adding an essential touch to enhance any designers' space.

FINISHES OPTION



GLASS

Clear 24

MATERIAL

Glass

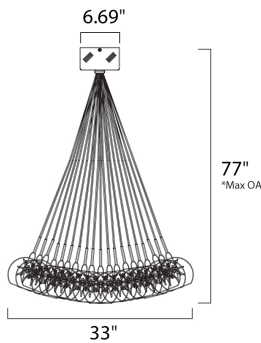
RATINGS

cETLus
Dry Location



ADDITIONAL

TRANSFORMER
RATED LIFE 2000 Hours
OPERATING TEMPERATURE:
-20°C (-4°F), 40°C (104°F)



*max overall height of fixture

MEASUREMENTS

- DIMENSION : 33" L x 33" W x 52.5" H
- MAX OAH : 77" OAH
- CANOPY : 6.69" W x 2.95" H x 6.69" L
- HANGING WEIGHT : 12.68 lb

LAMPING

- INPUT VOLTAGE : V
- LUMENS : 4,440 Rated
- BULB : 37 x 10W Xenon 12V G4 , 370W Total
- BULB INCLUDED : (Included)
- DIMMABLE : Low-Voltage Electronic
- COLOR_TEMP : 2900K

Always consult a qualified electrician before installing any lighting product.



WESTERN DISTRIBUTION CENTER (HEADQUARTER)
253 NORTH VINELAND AVE | CITY OF INDUSTRY, CA 91746
EASTERN DISTRIBUTION CENTER
4200 SHIRLEY DR. | ATLANTA, GA 30336
P. 626.956.4200 | F. 626.956.4225 | et2online.com